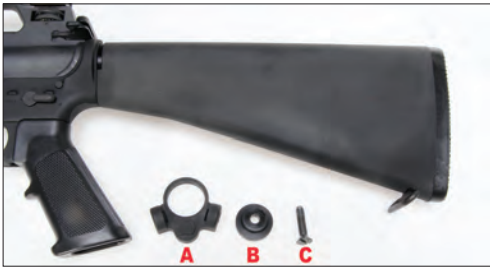
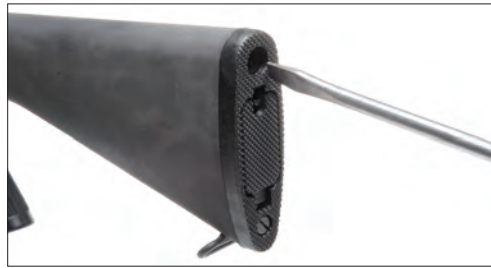




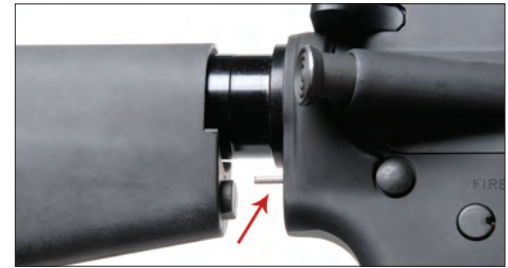
**WARNING! Observe safe firearm handling practices at all times. Make sure the firearm is unloaded and safety is engaged before starting installation. Installation should be performed by qualified gunsmith only!**



1. Parts included:  
A) Sling mount  
B) Stock spacer  
C) New longer buttplate screw



2. Remove upper screw from buttplate assembly.



3. Separate buttstock from receiver. (Be careful not to lose rear takedown detent spring or detent.)



4. Make sure large stock spacer is on receiver extension. (Note: Only A2 stocks will have large spacer.)



5. Slide sling mount down receiver extension with small plug facing forward.



6. Install supplied stock spacer on original tube spacer. (Note: Only A2 stocks will have large spacer.)



7. Slide buttstock down over receiver extension.



8. Slide sling mount down receiver extension. Carefully collapse rear takedown detent spring back into detent hole with sling mount and slide buttstock down against mount.



9. Put one drop of thread locking compound onto new buttstock screw. Insert screw into hole and tighten.



10. Rifle with mount installed.



11. Depress center button of S.S.Q.D. sling adaptor and install into mount hole.



12. Rifle with sling mount and sling adapter installed.